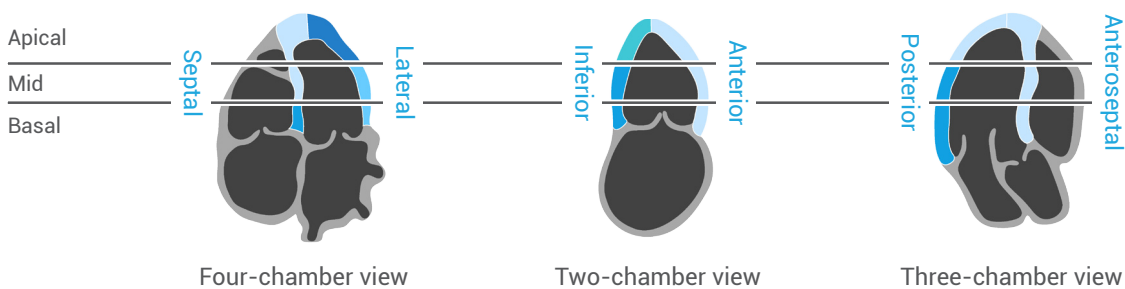
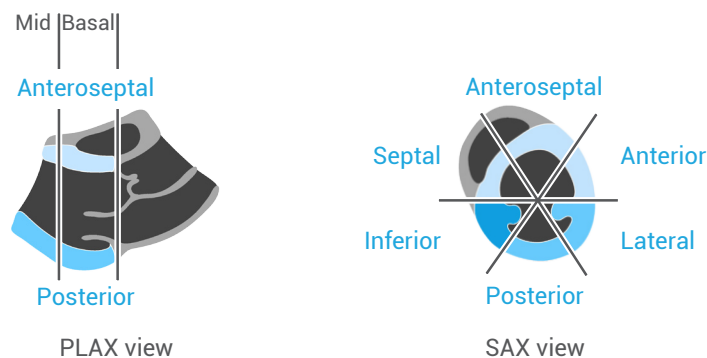


THE VENTRICLES AND PULMONARY PRESSURES

Identifying left ventricular regional wall abnormalities

Use these diagrams to guide you when you assess regional wall abnormalities. The walls can be described as 'normal', 'hypokinetic', 'akinetetic', 'dyskinetic', 'aneurysmal', or 'hyperkinetic'. The 16- and 17-segment models have different terms for some of the walls so make sure you use the same model as your colleagues.

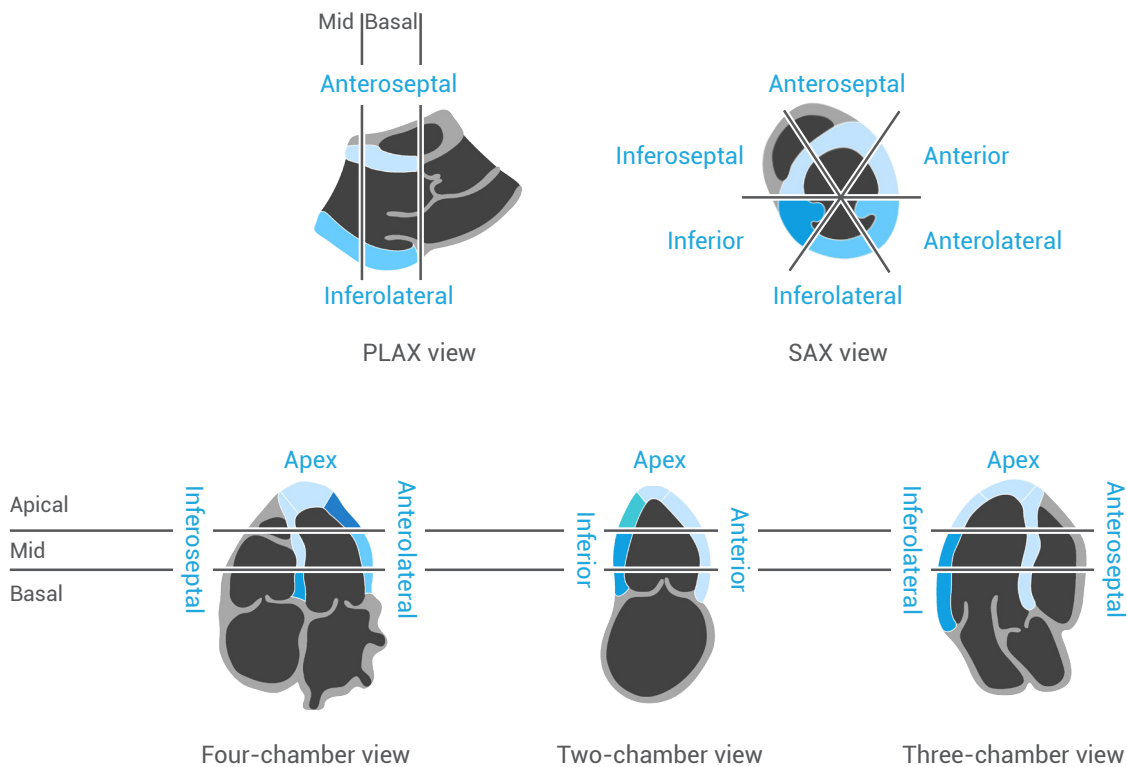
16-segment model



Territories of the coronary arteries:

- Left anterior descending distribution
- Right coronary artery distribution
- Circumflex distribution
- Left anterior descending/circumflex overlap
- Left anterior descending/right coronary artery overlap

17-segment model



Territories of the coronary arteries:

- Left anterior descending distribution
- Right coronary artery distribution
- Circumflex distribution
- Left anterior descending/circumflex overlap
- Left anterior descending/right coronary artery overlap

The 16- and 17-segment models are reproduced from Segar DS et al. 1992. *J Am Coll Cardiol.* **19**:1197–1202.

References and further reading:

Segar DS, Brown SE, Sawada SG, et al. 1992. Dobutamine stress echocardiography: Correlation with coronary lesion severity as determined by quantitative angiography. *J Am Coll Cardiol.* **19**:1197–1202.